

# Visiting rules of AVAPS s.r.o. Testing and Development Centre

Dear visitors,

You are at the AVAPS s.r.o. Development and Testing Centre. Although it is a modern workplace, it is equipped with heavy duty equipment and the AVAPS staff safety instructions must be followed. Please observe the instructions of the Company's employees and also follow the instructions below:

## Risks introduction

### Risks in the Development and Testing Centre:

Apart from the general risks (tripping, slipping, falling from stairs, that are described in the risk assessment documentation and are generally known, please avoid the following activities:

#### Crane operation:

- The crane can only be serviced by qualified and competent AVAPS employee. Crane servicing by visitors or external personnel (except Demag service staff) is prohibited.
- The movement of persons in the area where the crane is being handled is prohibited.
- It is prohibited to lean the ladder on test frames and climbing on the test frames.

#### Furnace Operation:

- The oven can only be serviced by AVAPS employees, provably familiar with the operating instructions.
- Do not touch the hot parts of the test device.
- Do not operate the testing device (furnace) unless a frame with test sample is placed in front of it.
- Do not keep near the furnace when in use unless it is absolutely necessary.
- Remove all flammable substances from the workplace before starting up the furnace - whether they are flammable liquids, gases or combustible materials such as paper, rags or plastics.

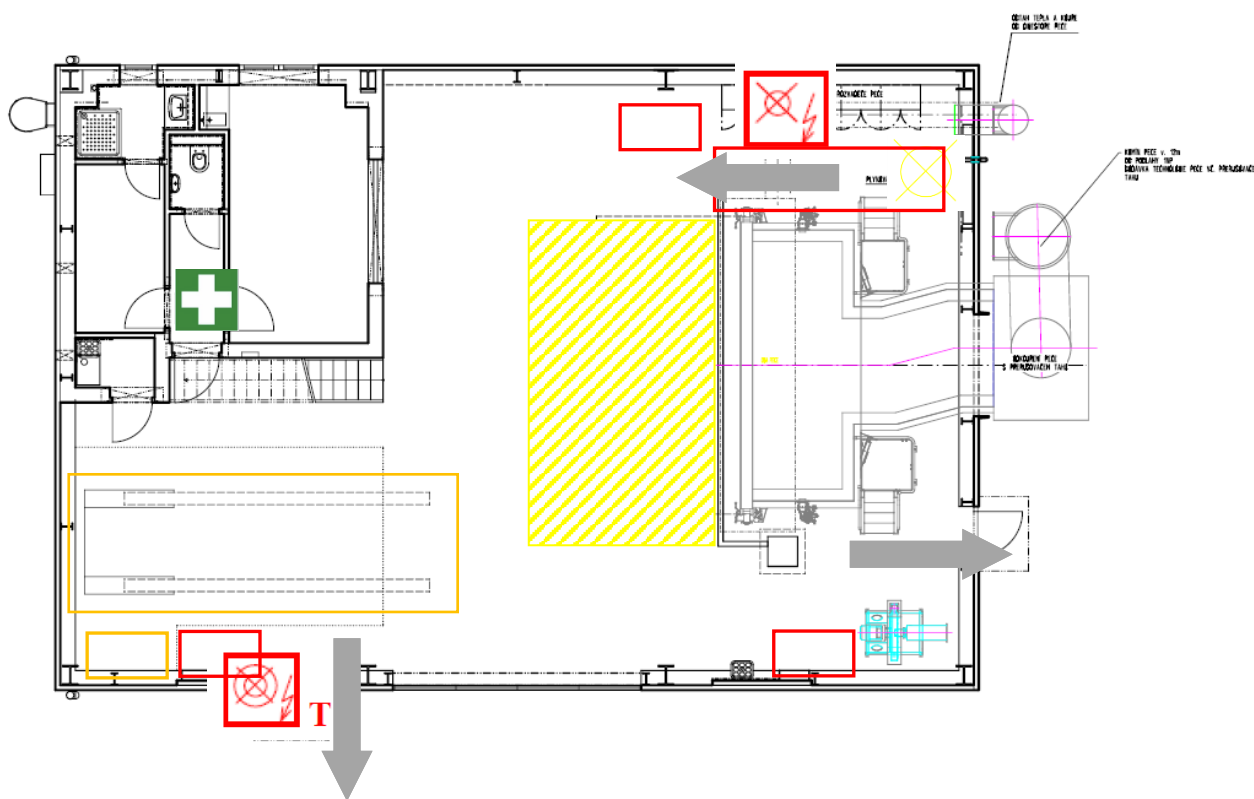
**Observe the instructions of the testing device (furnace) operator.**







**Learn about the location of security devices, fire extinguishers, and escape routes.**

**The first aid kit is located in the administrative center of the Development Center.**

**Please use the following protective wear:**

- Closed shoes
- Trousers with long legs, preferably from material that resists higher temperatures and does not tend to melt (do not use synthetic materials such as polyester, etc.). A long sleeve shirt or sweatshirt is strongly recommended.
- Protective helmet
- Safety glasses (not necessary if the helmet is shielded)
- Reflective vest



-  Area reserved for storage of Development Center's equipment
-  Area which has to stay free (e.g. switchboards, HP)
-  The gas cap for the test furnace (HUP is located on the outside of the building)
-  Total stop
-  Emergency stop – safety switch for operating the furnace
-  Testing area